

SMARTKEEPER PRO Line Up

Universal Lock Key 3 works with

- USB Port Lock
- USB-B Port Lock
- USB-C Port Lock Plus
- Link Lock
- Link Lock Hub
- Link On
- Secure Drive
- Secure Connector
- Network Port Lock Plus
- LAN Cable Lock Plus
- Secure LAN Cable Coupler
- Network Module Lock 4/8/12P
- LAN Cable Link Lock + Dedicated Cable
- Fiber Optic LC Cable Lock Dual
- Fiber Optic LC Cable Lock Single
- Fiber Optic Module Lock Plus
- QSFP Port Lock
- Serial Port Lock
- DVI Port Lock
- Parallel Port Lock
- SD Port Lock
- CF Port Lock
- ODD Lock
- DisplayPort Lock
- BNC Port Lock
- RF Module Lock (Type N/M)

Lock Key Mini works with

- Mini USB-B Port Lock
- Micro USB-B Port Lock
- USB-C Port Lock
- E-SATA Port Lock
- HDMI Port Lock
- Mini DisplayPort Lock
- RJ45 Port Lock

No key required

- USB Closing Lock
- LAN Cable Grip
- PC Lock (Key Type)
- PC Lock (Combination)
- LAPTOP DOCK & LOCK
- Laptop Lock (Combination)
- Laptop Lock Plus (Combination)

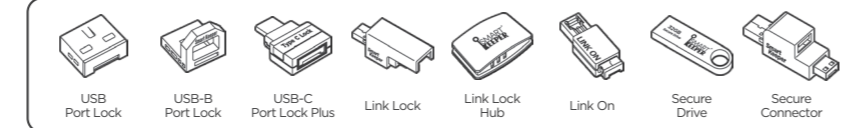
Lock Keys

- Universal Lock Key 3
- Lock Key Mini

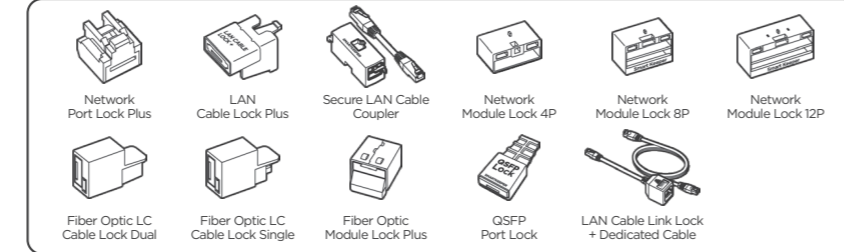
www.smartkeeperworld.com
Made in Korea

Items working with Universal Lock Key 3

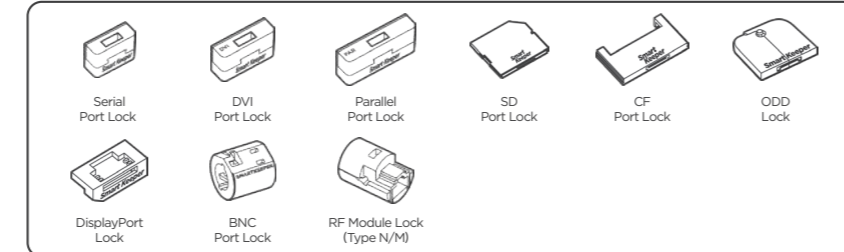
USB Physical Security



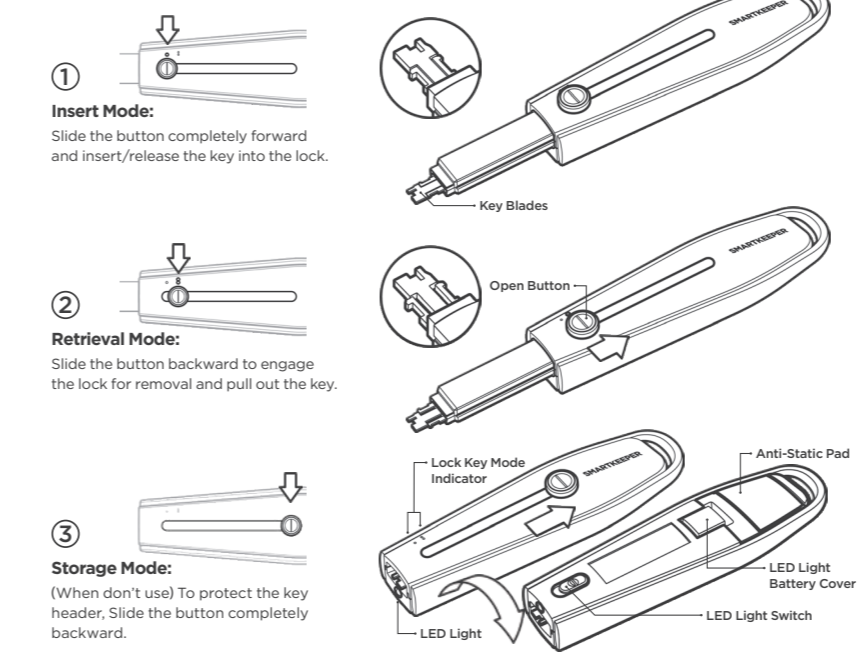
Network Physical Security



Other Physical Security

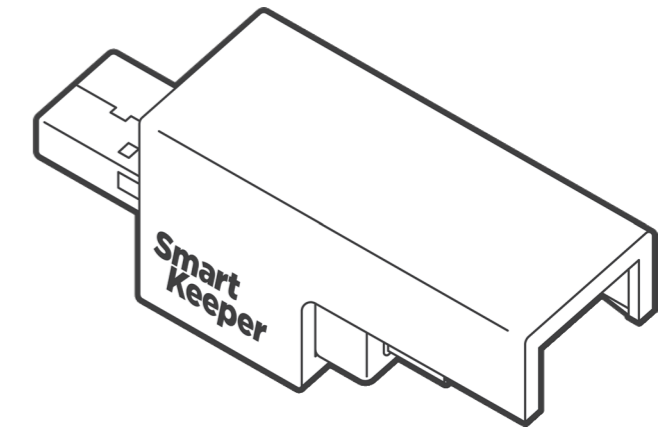


Universal Lock Key 3 How to use



- Caution**
- Make sure that the key is carefully and fully engaged before removing lock.
 - Be careful of sharp key blades. (Put the key blades into storage mode not in use.)
- Note**
- The manufacturer or vendor is not responsible for any inability to check the serial number.

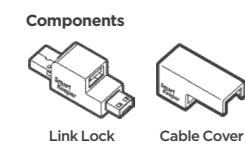
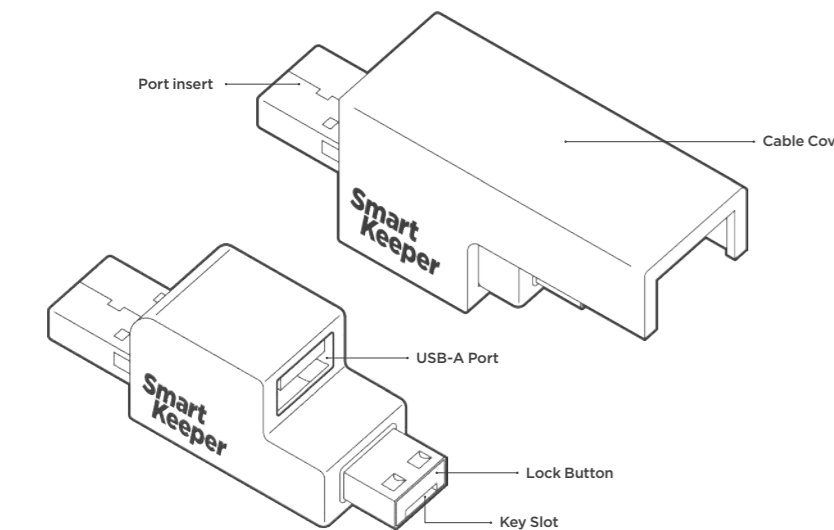
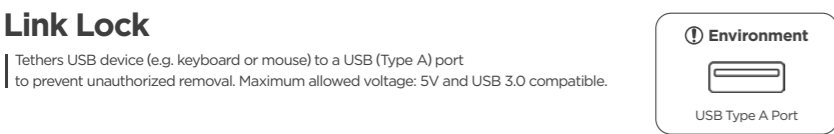
Link Lock User Guide



SMARTKEEPER
PROFESSIONAL

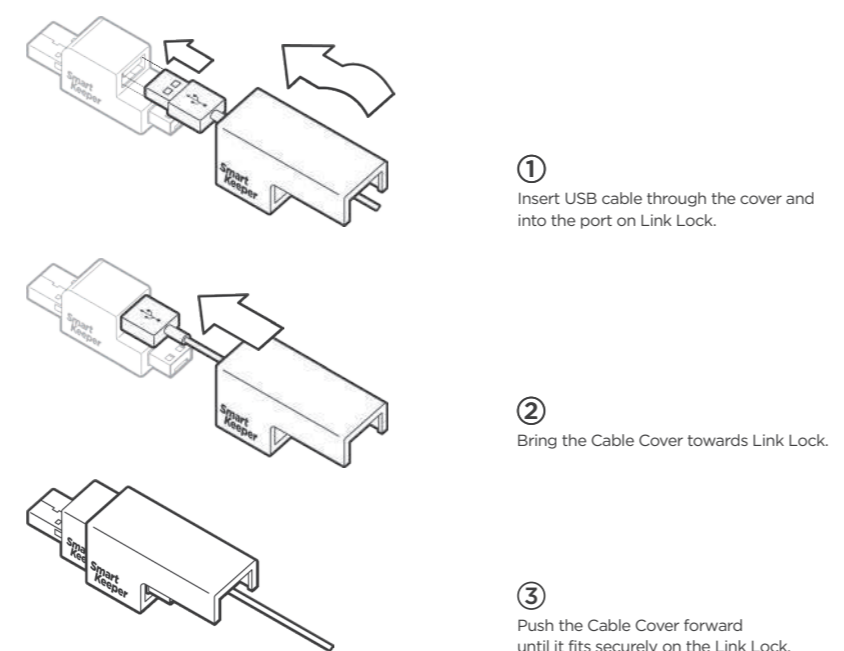
Link Lock

Tethers USB device (e.g. keyboard or mouse) to a USB (Type A) port to prevent unauthorized removal. Maximum allowed voltage: 5V and USB 3.0 compatible.

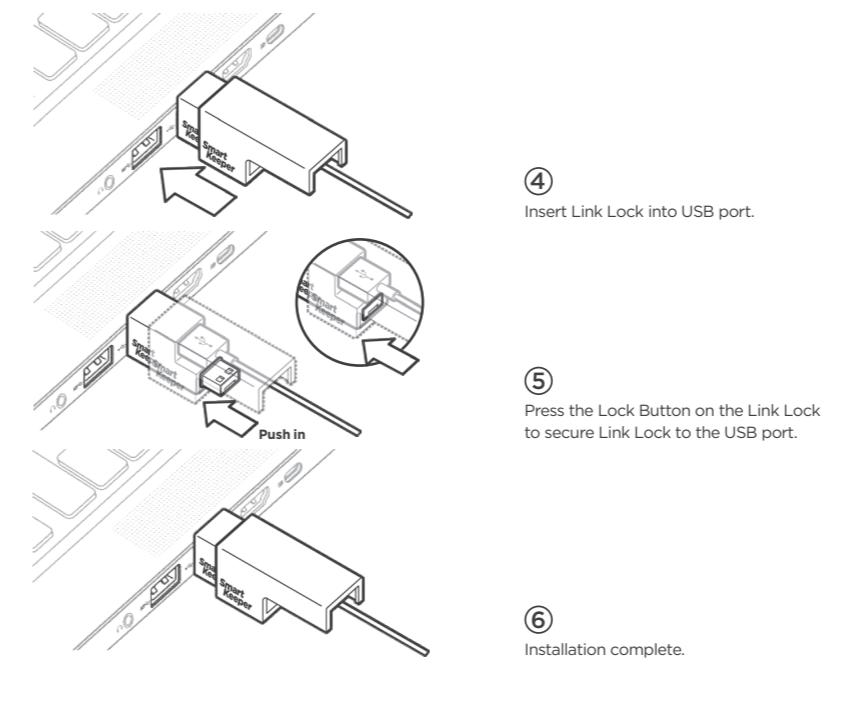


Component	Specification
Link Lock	Width x Height x Length(Depth): 16.2 x 16.0 x 40.9mm(0.64 x 0.63 x 1.61in) Weight: 13.1g(0.46oz)

Installation

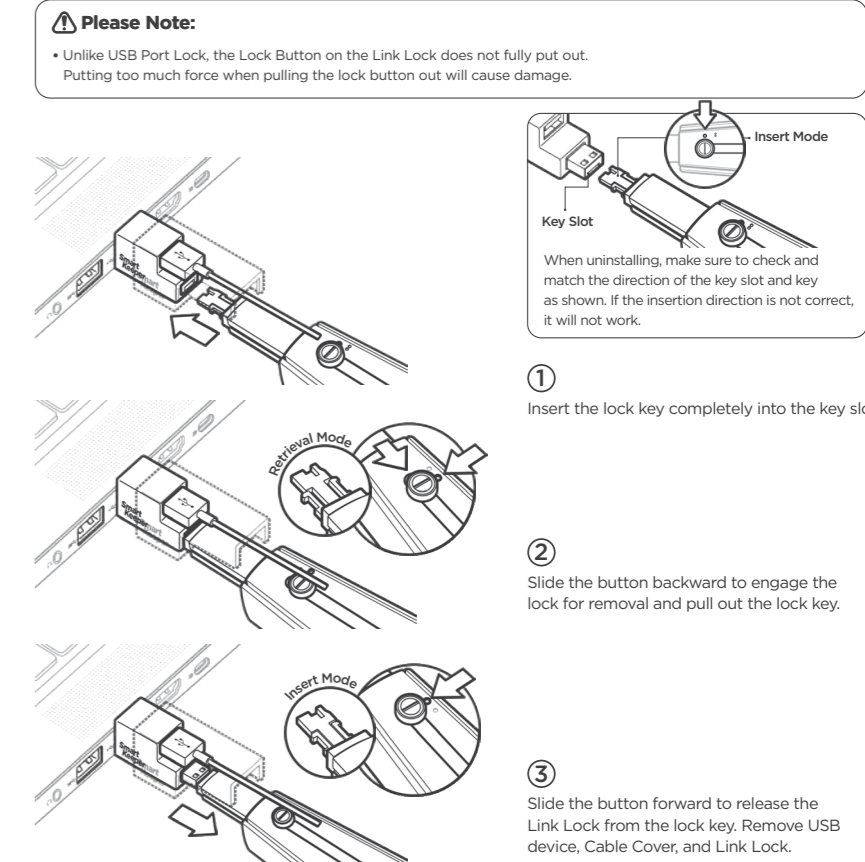


- Please Note:**
- As illustrated, some USB ports may be physically incompatible and the Link Lock will not lock into the port.

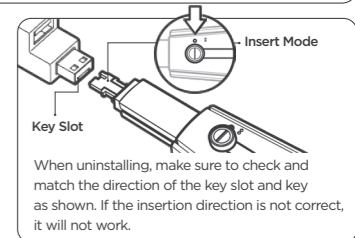


- Please Note:**
- If the USB plug is too large to the Cable Cover, Link Lock may be used without the Cable Cover.
 - When used without Cable Cover, USB device can be removed from Link Lock but cannot be reinserted without releasing the Lock Button with the lock key.

Uninstall (Removal)



- Please Note:**
- Unlike USB Port Lock, the Lock Button on the Link Lock does not fully put out. Putting too much force when pulling the lock button out will cause damage.



- When uninstalling, make sure to check and match the direction of the key slot and key as shown. If the insertion direction is not correct, it will not work.